

# **WI VIRTUAL ACADEMIES**

## **ANNUAL REPORT**

**PRESENTED BY:  
DR. SARA CUTLER**

**EXECUTIVE  
DIRECTOR**



**Wisconsin Virtual Academy  
Destinations Career Academy  
Insight School of Wisconsin**

# OUR LEADERSHIP TEAM

## WVA LEADERSHIP TEAM



Wisconsin Virtual Academy  
Destinations Career Academy  
Insight School of Wisconsin

### Senior Leadership-



Sara Cutler  
Executive Director



Erin Haugom  
Operations Manager



Becky Eberhardt  
Special Programs  
Manager



Britta Hanson  
ES Principal



Carrie Cherney  
MS/HS  
Principal



Matt VanEffen  
MS  
Asst. Principal



Casey Twanow  
HS  
Asst. Principal



Jen Wegner  
DCA/ ISWI  
Principal



Josh Rankin  
DCA Site Coord/  
Asst. Principal



Saycha Basken  
Asst. Special  
Programs Manager

With a new school year came changes in school leadership:  
Carrie Cherney, Principal and Casey Twanow, Assistant Principal

Wisconsin Virtual Academies is pleased to announce Carrie Cherney as the new Lead Principal for WIVA MS and HS, grades 6-12. Carrie has worked at our schools for 16 years and has successfully served in the role of Assistant Principal at WIVA High School and Principal at WIVA Middle School. She has proven to be a strong leader connected to the mission, vision, and purpose of WI Virtual Academies.

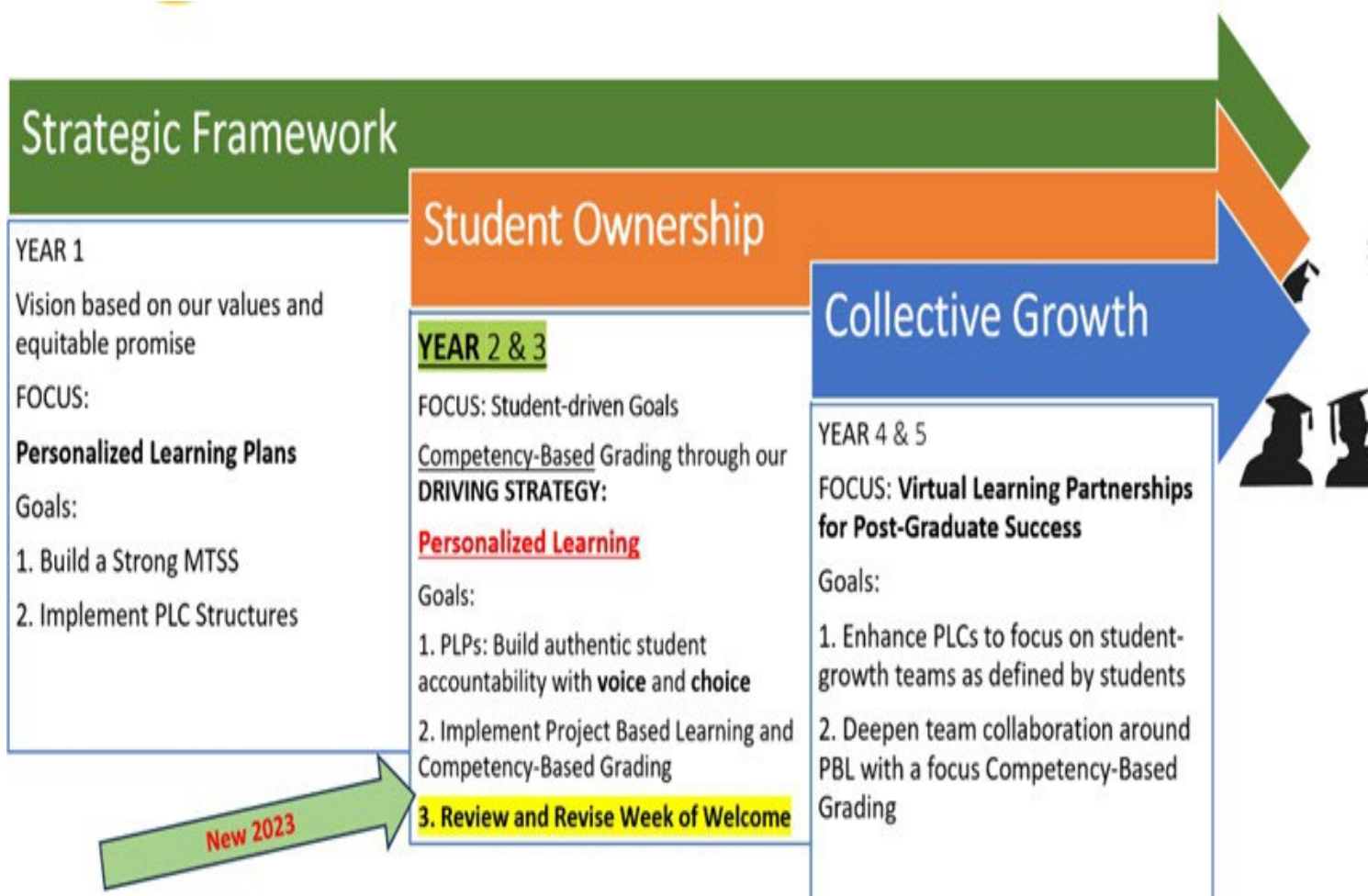
Casey Twanow will continue serving WIVA HS but in a new role as Assistant Academic Administrator (Assistant Principal). For the past two years, Ms. Twanow has worked hard to co-develop strong Multi-Levelled Systems of Support at WIVA HS. She has proven to be a strategic thinker and knows WIVA from an instructional standpoint as well as from a student intervention perspective.

Additionally, Matt VanEffen is the new Assistant Principal at WIVA Middle School. Matt is returning to us after a few years away. In 2020 he taught at WIVA and his students loved him! We are excited to bring him on board as a school leader.

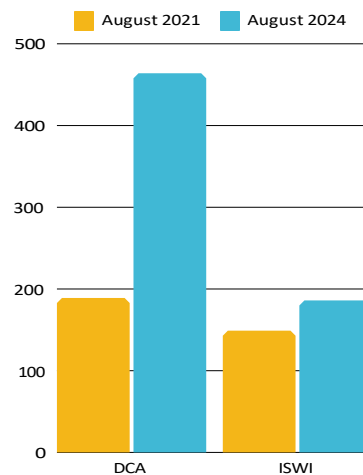
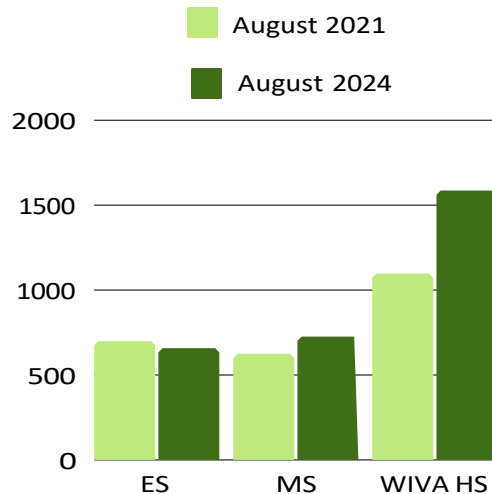
# Table of Contents

<b>SY23-24 Strategic Planning</b> .....	
<b>STRATEGIC PLAN UPDATES</b> .....	
PARENT SATISFACTION .....	5
ACADEMIC GROWTH .....	6
ENGAGEMENT .....	7
WEEK OF WELCOME.....	8
<b>MULTI-LEVEL SYSTEMS OF SUPPORT</b> .....	
MS SUPPORTED SECTIONS .....	10
LEVELS OF SUPPORT .....	11
MTSS RESULTS .....	12
<b>GRADUATION</b> .....	
<b>HIGHLIGHTS</b> .....	
<b>PRIORITIES SY25</b> .....	

# SY23-24 Strategic Planning

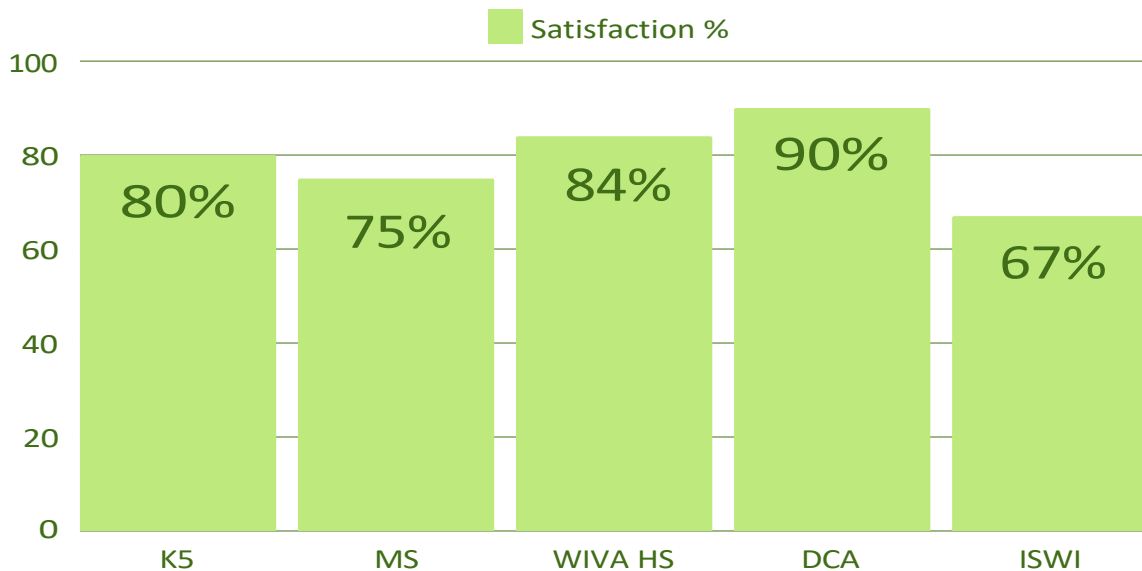


## Enrollment 3 years



# STRATEGIC PLAN UPDATES

## PARENT SATISFACTION



PER OUR CHARTER AGREEMENT WE WORK TOWARD 80% OF PARENTS INDICATE SATISFACTION IN OUR SCHOOL PROGRAMMING

FOR THE LAST SURVEY OF THE YEAR 3 OF OUR 5 SCHOOLS REACHED OR EXCEEDED 80%

# WVA Student Achievement Goals:

1. Increase academic **G**rowth

-70% of Students  
Meet their Growth Goals



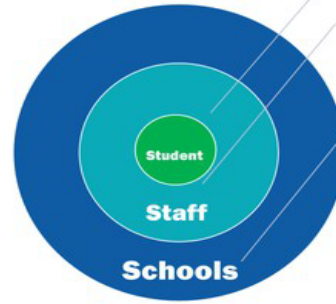
2. Decrease withdrawal  
increase enrollment

-10% Decrease in CWM



3. Increase **G**raduation rates

-10% Increase in Graduation Rate



Personalized Learning Plans

Student Learning Objectives

**3Gs**

## ACADEMIC GROWTH

	EOY SY23	GOALS SY24	EOY SY24	
ISWI	48%	53%	56%	MET BUT WITH ONLY 38% PARTICIPATION
DCA	59%	64%	61%	3% SHY
WIVA	3-5: 48% MS: 46% HS: 58%	3-5: 53% MS: 51% HS: 63%	K5: 55% MS: 53% HS: 61%	K5- MET MS- MET HS- 2% SHY

**ALL SCHOOLS CONTINUE TO INCREASE TOWARD 70% OF ALL STUDENTS MEETING THEIR GROWTH GOALS.**

**3 OUT OF 5 OF THE SCHOOLS MET A 10% INCREASE IN THE NUMBER OF STUDENTS MEETING ONE YEAR'S GROWTH OR ABOVE.**

# ENGAGEMENT

## IN-YEAR WITHDRAWAL PERCENTAGE

Engagement	
ISWI	16%
DCA	12%
WIVA HS	12.6%
WIVA MS	13.6%
WIVA K5	16.4%

**WITH A FOCUS ON EARLY INTERVENTION  
38% OF THE STUDENTS  
WHO STARTED THE FAIL-TO-PARTICIPATE PROGRESS  
WERE REMOVED BY THE MCFARLAND SCHOOL BOARD**

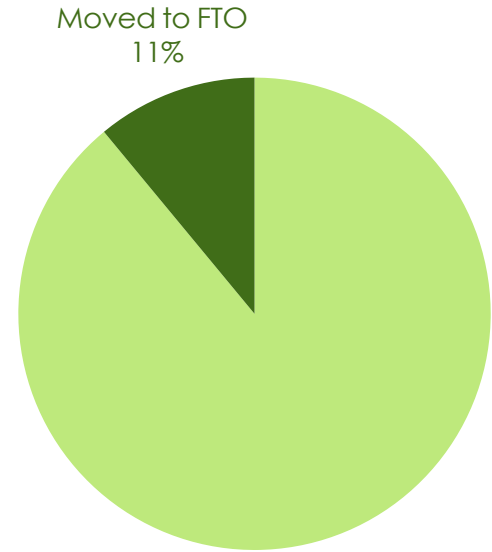
<b>SY23.24 TOTAL</b>	
<b>Students in FTP:</b>	<b>1,308</b>
<b>Students removed</b>	<b>508</b>

# WIVA WEEK OF WELCOME

WOW OUTCOMES: 99% OF STUDENTS WHO ENROLL AND GO THROUGH WOW THIS YEAR REMAIN ENROLLED.

K-8

- ADJUSTED SYNCHRONOUS AND ASYNCHRONOUS SUPPORTS.
- 936 NEW STUDENTS THIS YEAR!
- 750 OF 936 STARTED AFTER THE FIRST DAY OF SCHOOL AND REMAINED THROUGH THE END OF THE YEAR.
- 434 OF THE 750 STARTED IN SEMESTER 2.
- 513 WILL BE RETURNING FOR NEXT YEAR.



HS WOW RESULTS	FALL	SPRING	TOTAL
SUCCESSFULLY ONBOARDED	598	394	992
MOVED TO FTO	41	79	120
REMOVAL	20	27	47
WITHDRAWN	4	5	9
RE-ENGAGED	14	43	57
OTHER	3	4	7



# DCA WEEK OF WELCOME

WOW OUTCOMES: 99% OF STUDENTS WHO ENROLL AND GO THROUGH WOW THIS YEAR REMAIN ENROLLED.

## Week of Welcome Schedule

<u>MONDAY</u> Day One	<u>TUESDAY</u> Day Two	<u>WEDNESDAY</u> Day Three	<u>THURSDAY</u> Day Four	<u>FRIDAY</u> Day Five
Each synchronous session begins promptly at 8:30am				
Attend WOW DCA Overview	Attend WOW Online Learning Overview Meet with DCA Counselor	Attend WOW Orientation Course Work Time/Support Meet with DCA Counselor	Attend WOW Xello Completion Meet with DCA Counselor	Attend WOW Review of Expectations to Begin Classes on MONDAY!
Complete STAR Assessments	Completion of Orientation Course	Completion of Orientation Course	Orientation Course DUE at the start of DAY FOUR.	Following items must be completed in order to start courses following Monday: <ul style="list-style-type: none"> <li>• STAR Assessments</li> <li>• Attendance in all 5 days of WOW</li> <li>• Completion of Orientation Course</li> <li>• Xello Completion</li> <li>• Meeting with Counselor</li> </ul>
<p>*Students must attend all 5 days of WOW and complete all components within the 5 days. If not, students are at risk to start the disenrollment process.</p> <p>● = Synchronous Learning (LIVE learning with DCA staff) ● = Asynchronous Learning (on your own)</p>				

DCA WOW RESULTS	FALL	SPRING	TOTAL
SUCCESSFULLY ONBOARDED	227	137	364
MOVED TO FTO	7	14	21
REMOVAL	3	1	4
WITHDRAWN	10	4	14

# MULTI-LEVEL SYSTEMS OF SUPPORT

- STRENGTHENED THE PROCESS WITH COLLABORATION AND COMMUNICATION WITHIN AND OUTWARD
- CONSISTENT DATA MONITORING
- SPECIAL PROGRAMS ADVANCED LEARNING TIER 2 & 3 EVALUATION OF TIER 1

## MS SUPPORTED SECTIONS

INCLUDED 1A AND 1BC SECTIONS.

- 1A - STUDENTS WHO ARE 5TH PERCENTILE OR BELOW IN BOTH MATH AND READING.
- 1BC - STUDENTS WHO ARE BELOW BASIC IN BOTH MATH AND READING (2ND-5TH LEVEL).
- ◆ BUILT-IN INDIVIDUALIZED REMEDIATION WITH FRECKLE READING AND MATH.
- ◆ CO-TAUGHT SECTIONS TO HELP MEET IEP GOALS (WHERE APPLICABLE).
  - POSITIVE FEEDBACK FROM PARENTS AND STUDENTS - ABLE TO MEET STUDENTS WHERE THEY ARE AT.

# LEVELS OF SUPPORT

STRONG START/ WEEK OF WELCOME: STRONG ONBOARDING EXPERIENCE FOR THE VIRTUAL SCHOOLING PROCESSES.

FIRST YEAR FORUM: LATE START WIVA HS STUDENT SUPPORTS IN DIGITAL LITERACY. INSTRUCTION IS DELIVERED WITH SLOWER PACE AND ENROLLED IN ONLY FOUR CLASSES.

BRIDGES: A TRAUMA-INFORMED HS PROGRAM FOCUSED ON BUILDING RELATIONSHIPS AND SOCIAL EMOTIONAL COMPETENCIES WITH LESSER CREDITS INITIALLY

MENTORING: PERSONALIZED ATTENTION AND SUPPORT FOR STUDENTS & FAMILIES TO FOSTER STUDENT OWNERSHIP AND OVERCOME BARRIERS

CREDIT RECOVERY: ACCELERATING CREDIT DEFICIENT STUDENTS IN EARNING CREDITS USING A SELF-PACED PROGRAM TO GRADUATE WITH SAME AGED PEERS

LEAP: INSTRUCTION ON GRADE LEVEL STANDARDS USING LOWER LEVELED TEXTS AND SCAFFOLDING INSTRUCTIONAL STRATEGIES IAND DIRECT INSTRUCTION WITH CO-TEACHING TO BUILD AND BRIDGE STUDENT SKILL GAPS.

FLEX: ASYNCHRONOUS COURSES FOR STUDENTS WHO DEMONSTRATE THE ABILITY TO SCHOOL INDEPENDENTLY AND SEEK OUT ASSISTANCE WHEN NEEDED

SECTIONS/CO-TEACHING: BOTH GENERAL EDUCATION AND SPECIAL EDUCATION TEACHERS DELIVER INSTRUCTION WITH ADDITIONAL SUPPORTS.

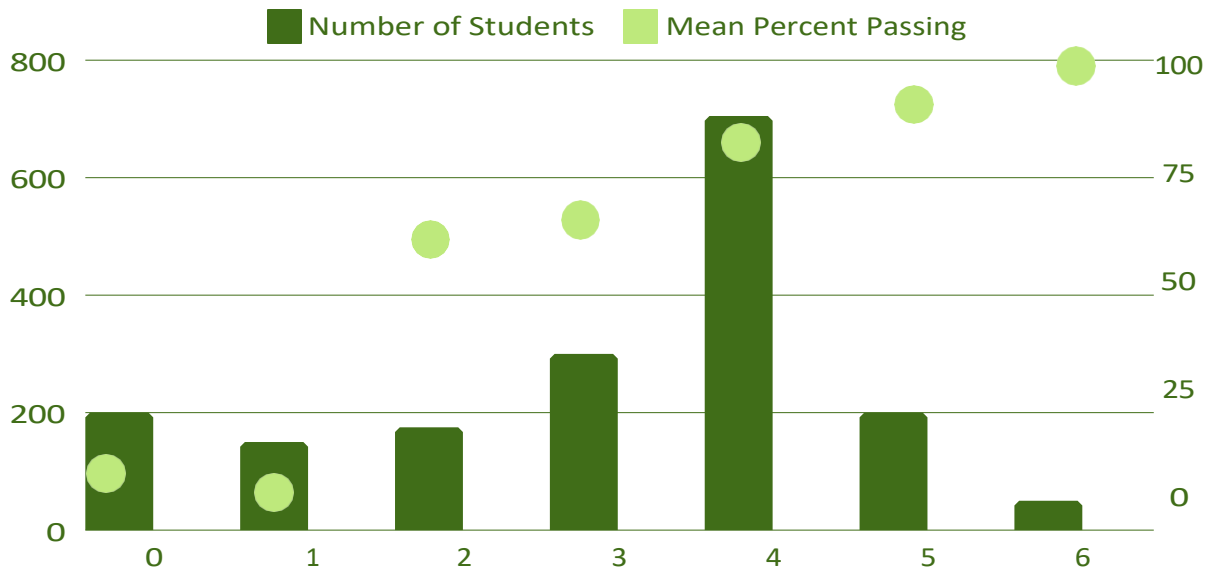
WIVA HS	SY22		SY23		SY24	
FIRST YEAR FORUM	FALL	SPRING	FALL	SPRING	FALL	SPRING
FYF/ALL LATE START	NO FYF	233/315	300/410	215/252	276/344	210/238
PASSING RATES FYF	18%	59%	45%	48%	54%	66%

## Off-Boarding Schedule

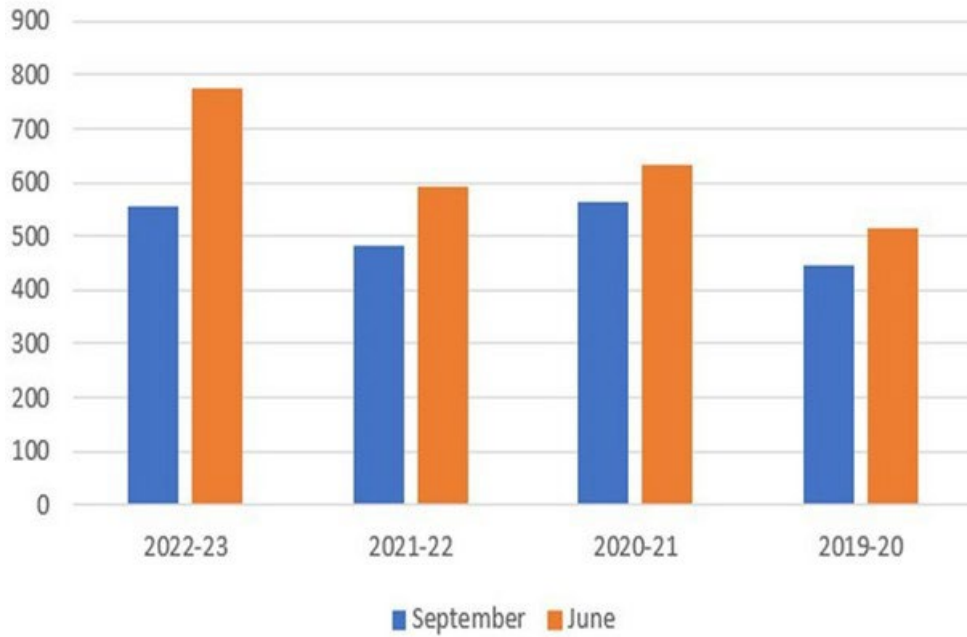
DAY ONE	DAY TWO	DAY THREE	DAY FOUR	DAY FIVE
M/F : 11:20-12:05, Tu/Th : 3:40-4:25				
<b>Attend Check-in</b> Check-in with WOW mentor. Access courses, ask questions, create plan of action to catch up.	<b>Attend Study Hall</b> Work the plan made in Monday's check-in	<b>Make progress in courses</b> Complete work in all courses to get caught up.	<b>Attend Study Hall</b> Work the plan made in Monday's check-in	<b>Attend Check-in</b> Review progress made in courses, ask questions, create plan of action for following week.
	<b>Attend all classes + HR</b>		<b>Attend all classes + HR</b>	

After Off-Boarding, this time turns into a Study Hall for students to catch up in all their courses. Once a student is caught up in all courses, they can request a check-in with a Mentor to review their progress and be taken out of Study Hall.

# MTSS RESULTS



Total Number of Special Education Students



State Report Card Measure	21-22 SY Data	22-23 SY Data First Year of MTSS Implementation
4-year Graduation Rate (%)	71.4	74.9
7-year Graduation Rate (%)	71.8	75.6
Advanced Courses (AP) (#)	55	30
Dual Enrollment Courses (#)	0 ?	43

# GRADUATION

## STRATEGIES

- ISWI
- SEE STATE'S COMPREHENSIVE SCHOOL IMPROVEMENT PLAN INCLUDING A REDUCTION IN CREDITS TO GRADUATE
- DCA
- OFFER DIVERSE OPPORTUNITIES FOR CREDIT ACQUISITION MEASURED BY COMPETENCY-BASED GRADING
- WIVA
- DEVELOP PERSONALIZED LEARNING PLANS TO INCLUDE COMPETENCY BASED GRADING AND PROJECT BASED LEARNING FURTHERING STUDENT OWNERSHIP

	EOY SY23	GOALS SY24	EOY SY24
ISWI	41.5%	51%	46%
DCA	93%	95%	95%
WIVA	84.7%	ABOVE STATE AVE OF 90%	87%



# HIGHLIGHTS



Recruitment	Enrollment	Engagement
5 Summer/Fall Info Sessions Held	71 total students	Student to Business Professional Connections
55 Family/Student Tours	<ul style="list-style-type: none"> <li>• Male- 28</li> <li>• Female- 43</li> <li>• Students of color- 35</li> <li>• Economically disadvantaged- 45</li> <li>• Grade Level                             <ul style="list-style-type: none"> <li>• 9<sup>th</sup> Grade - 18</li> <li>• 10<sup>th</sup> Grade - 23</li> <li>• 11<sup>th</sup> Grade - 24</li> <li>• 12<sup>th</sup> Grade - 6</li> </ul> </li> <li>• Returning Students                             <ul style="list-style-type: none"> <li>• 4 FTP</li> <li>• 5 Withdrawals</li> <li>• 6 Undecided</li> <li>• 52 Returning</li> </ul> </li> <li>• 4 Graduates</li> </ul>	51 Engagement Sessions
100% Enrollment for families coming in for tour/information		No Code Hackathon (We In the World Org)
		Student interviews and articles of business professionals for <i>Kinect Leadership Series</i>
		Increased engagement toward the end of the year; additional communication to students and families supported this



## ISWI – Accreditation/Cognia

**WE BELIEVE**  
All students  
deserve an  
equitable education.

**WE PROMISE**

To support students in personalized learning, no matter where they are, who they are, or what they need.

I did it. I graduated 🎓 thank you to everyone who helped me get here especially my math teacher Mrs. Hall and my family of course. Thank you to all of you that came I love you guys. I'm finally done!!



ISWI's core values are centered on providing a relevant, personalized, student-first education.

Alternative education only works when we understand that all students deserve equitable support to surmount trauma, inequities, and prior negative experiences with schooling (remove barriers to learning).

Studies show that one caring adult can be the difference in a person's life...

Dear Lena

I would like to take this time to let you know the difference that you have made in my life, through you being an amazing teacher and support to me.

Through the years we have had together I have learned my strengths and weaknesses. How organization can help in school, but also in life. That I can overcome any challenge that comes my way. I can buckle down and accomplish anything. That it's okay to ask for help along the way. I enjoyed the time we spent on working, talking about the near future and what's going on in life. You've changed my outlook of school and I was able to enjoy it once again. You have made a huge impact in my life that I will be able to use in my life after school. I really appreciate everything you have done for me and the impact that you will continue to have on me. I really appreciate everything you have done for me and the impact that you will continue to have on me. I really appreciate everything you have done for me and the impact that you will continue to have on me.



# COMPLETED NATIONAL ACCREDITATION PROCESS FOR ALL 4 SCHOOL CHARTERS

## STATE REPORT CARD RESULTS

Grade Ra	School	2023 Equivalency Rat	Reasoning	Enrollment	% of SWDs	% lower SES	Authorizing District
9-12	Wisconsin Virtual Academy HS	Meets	Overall Score= 63.9/100 (3-Stars)	1270	20.6%	56.7%	McFarland
K-12	McFarland	Exceeds	Overall Score= 78.6/100 (4-Stars)	2444	11.3%	15.0%	McFarland
K-12	MPS	Meets	Overall Score= 58/100 (3-Stars)		19.2%	82.5%	NA
K-8	Wisconsin Virtual Academy KB	Meets Few	Overall Score= 55.0/100 (2-Stars)	1365	18.3%	66.4%	McFarland
9-12	Insight School of Wisconsin (Alt. Ed)	NA	Satisfactory Progress (Alt. Ed.)	173	17.9%	64.2%	McFarland
K-12	Green Bay	Meets	Overall Score= 58.2/100 (3-Stars)	18,903	16.2%	60.8%	NA
K-12	Rural Virtual Academy	Meets	Overall Score= 69.8/100 (3-Stars)	1850	15.9%	39.5%	Medford
K-12	MMSD	Meets	Overall Score= 68.3/100 (3-Stars)		15.4%	46.0%	NA
K-12	Deeper Learning Virtual Academy	Meets Few	Overall Score= 56.3/100 (2-Stars)	99	15.2%	75.8%	West Allis- West MKE
K-12	Saint Croix Virtual Academy Inc	Meets Few	Overall Score= 55.5/100 (2-Stars)	231	14.3%	37.2%	Saint Croix Central
K-12	ARISE Virtual Academy	Meets	Overall Score= 63.2/100 (3-Stars)	147	12.9%	55.8%	Janesville
9-12	Destinations Career Academy of Wisconsin HS	Meets	Overall Score= 62.5/100 (3-Stars)	232	12.5%	52.6%	McFarland
K-12	Jedi	Exceeds	Overall Score= 70.1/100 (4-Stars)	220	10.9%	25.0%	Marshall
K-12	Wauwatosa Virtual Academy	Does Not Meet	Overall Score= 46.2/100 (1-Star)	168	10.7%	14.3%	Wauwatosa
K-12	Bridges Virtual Academy	Exceeds	Overall Score= 77.3/100 (4-Stars)	832	8.5%	30.0%	Merrill
K-12	IForward	Meets Few	Overall Score= 56/100 (2-Stars)	896	7.8%	58.9%	Grantsburg
K-12	Wisconsin Virtual Learning	Meets	Overall Score= 68.9/100 (3-Stars)	351	5.7%	39.9%	Northern Ozaukee
K-12	Wisconsin Connections Academy	Meets	Overall Score= 63.1/100 (3-Stars)	718	1.7%	45.0%	Appleton

## MARKETING CAMPAIGN





# PRIORITIES SY<sub>25</sub>

## VISION OF A GRADUATE



### INSTRUCTIONAL DESIGN BASED ON THE VISION OF A GRADUATE

4K-8

- ACT 20
- 4K
- TARGETED HOMEROOM SUPPORT

WIVA HS

- ACADEMIC EXPERIENCES CONTINUED
- DISTRIBUTED LEADERSHIP MODEL

DCA

- DCA CONNECT
- 8TH GRADE CAREER EXPLORATORY
- 9TH GRADE HUMANITIES

### ORGANIZATIONAL STRUCTURES

COORDINATORS IN SPECIAL PROGRAMS

WORKSTREAMS WITH CROSS TRAINING AND COLLABORATION

COMMUNICATION STRUCTURES  
SHAREPOINT, ONENOTE ORGANIZATION

CONTINUED ONBOARDING IMPROVEMENTS  
STRONG START/ENROLLMENT COUNSELING